



DRILLING LOG



FROM :(mt) 1400

TO :(mt) 2700

SCALE : 1/ 1000

Well Name : BMA A19A

Company : ESSO AUSTRALIA

Country : AUSTRALIA

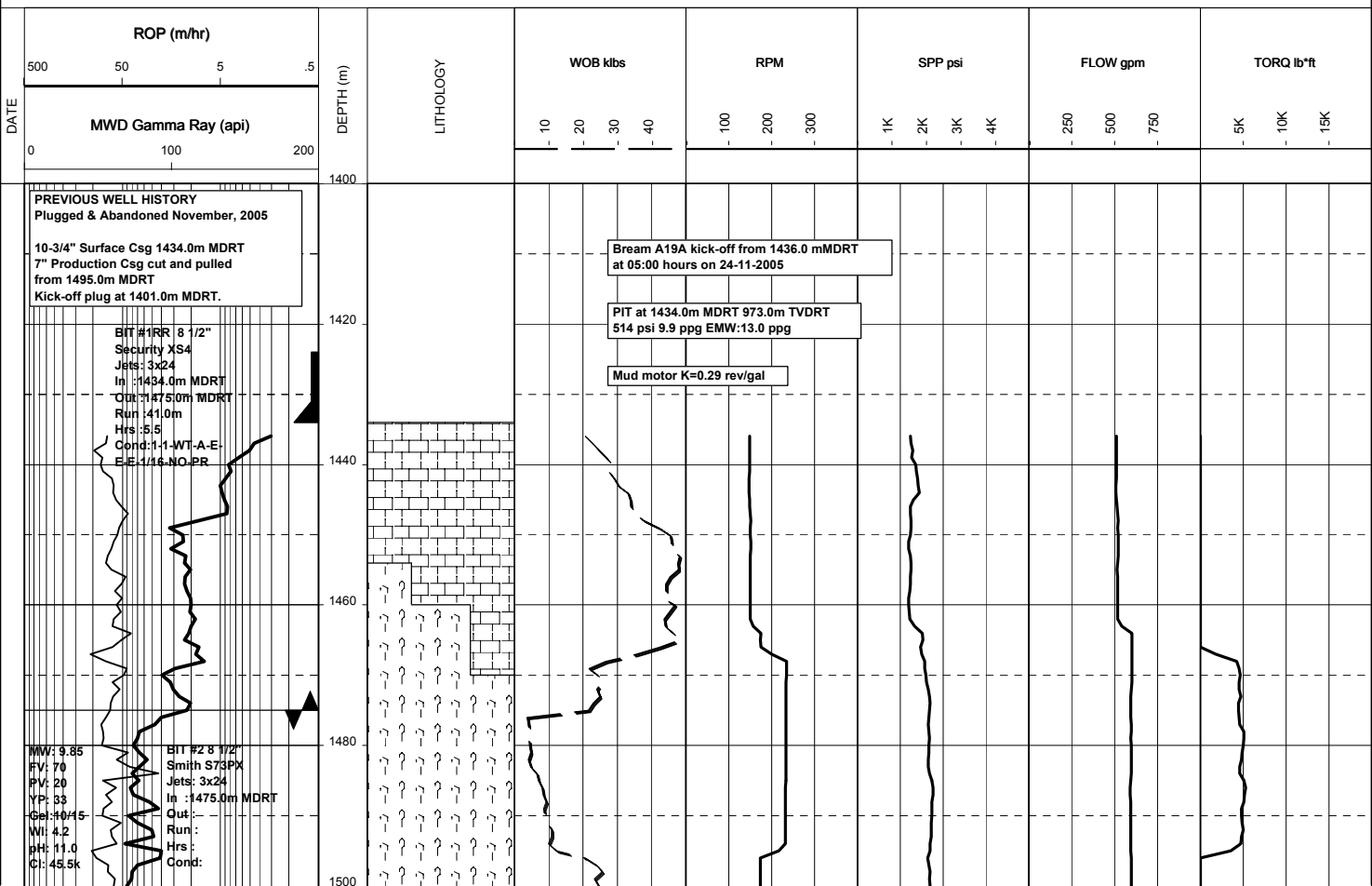
RT-MSL : 32.82m

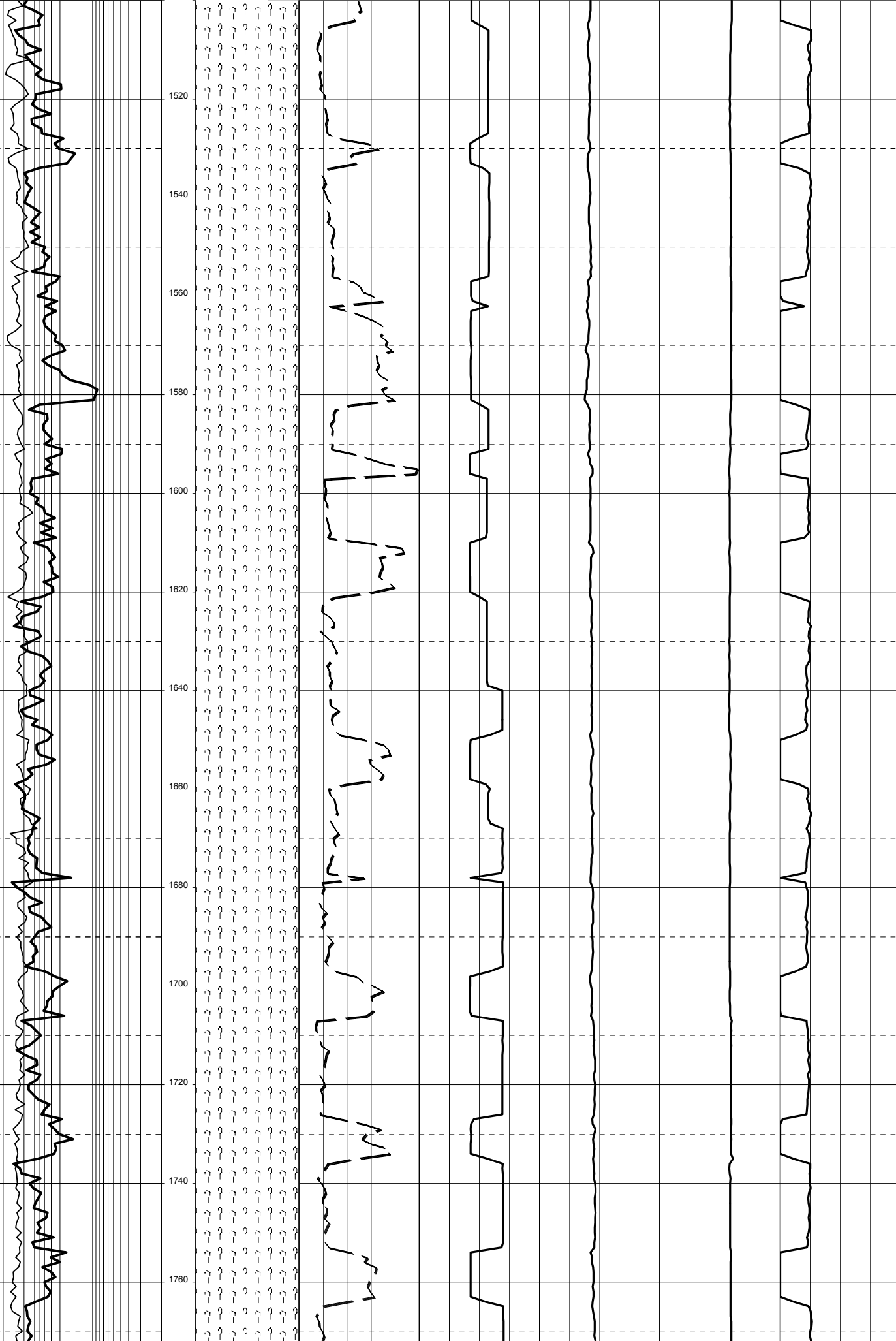
RT-SEABED : 92.22m

Final TD :

Final TVD :

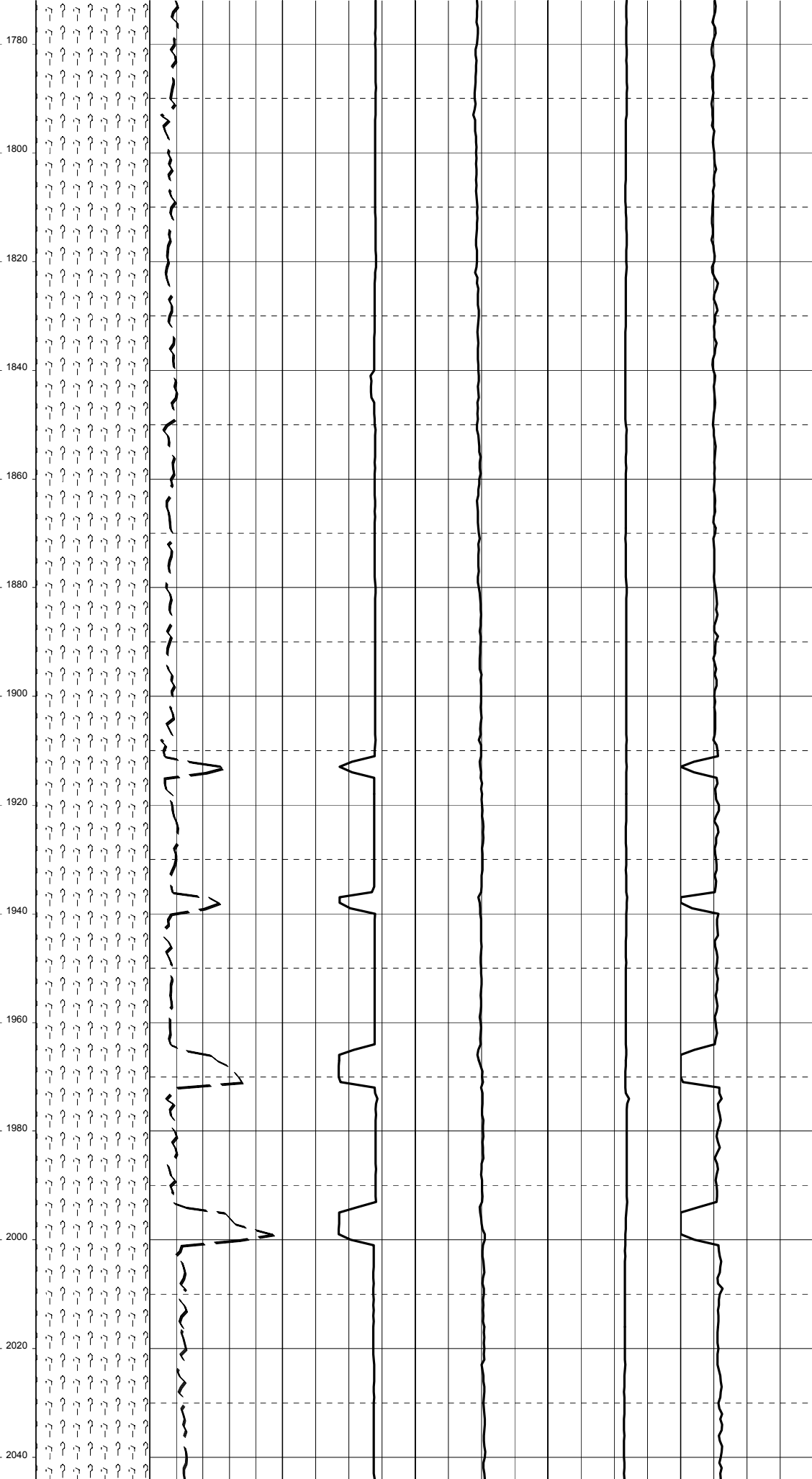
Generated by ALS Package

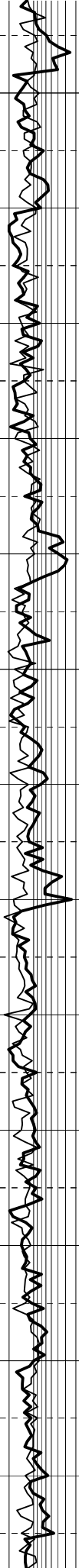




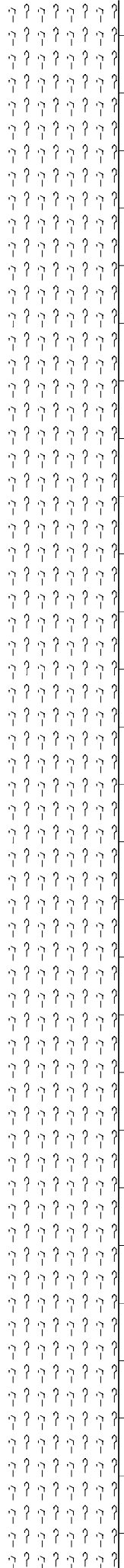
26-11-05

NW: 9.90
FV: 69
PV: 26
YF: 42
Gel: 11/19
Wt: 2.9
pH: 8.9
Cl: 46k

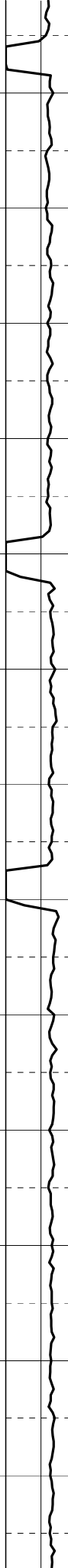
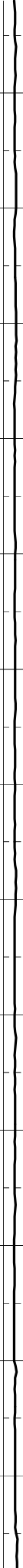




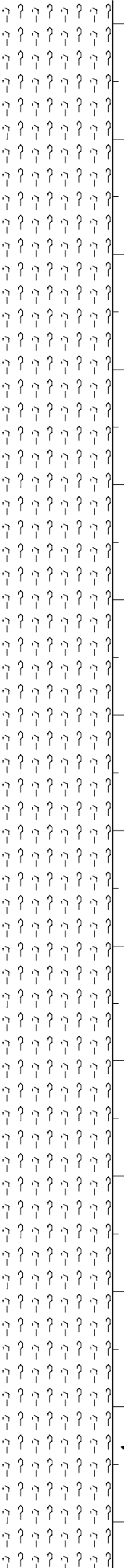
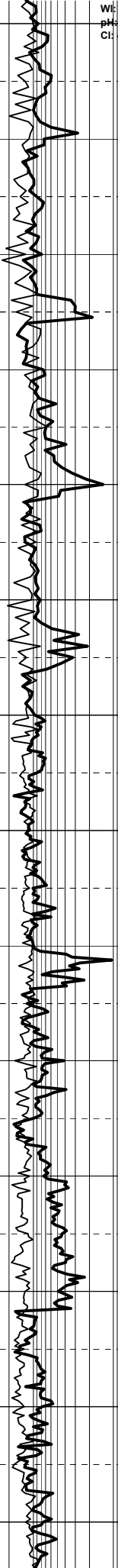
2060
2080
2100
2120
2140
2160
2180
2200
2220
2240
2260
2280
2300



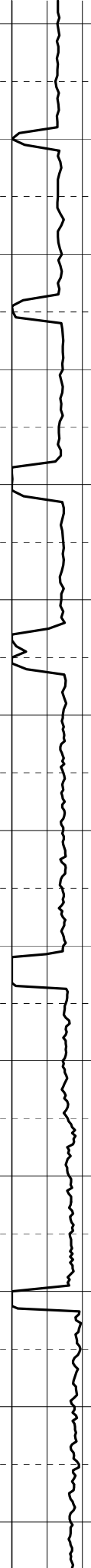
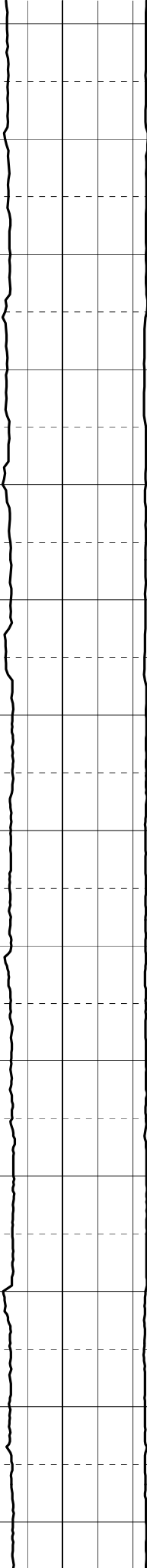
Handwritten annotations in the center of the grid, including a large '1' at the top and several 'W' characters with vertical lines extending downwards.



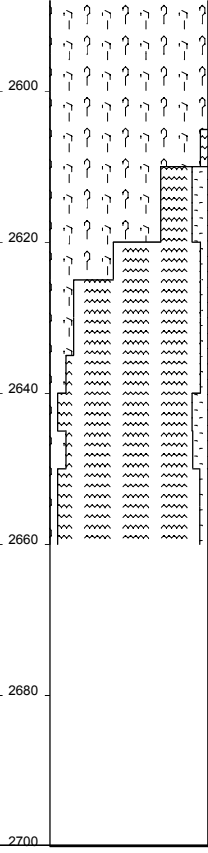
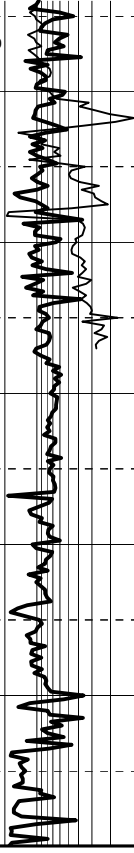
WI: 3.4
 PH: 8.8
 CI: 41k



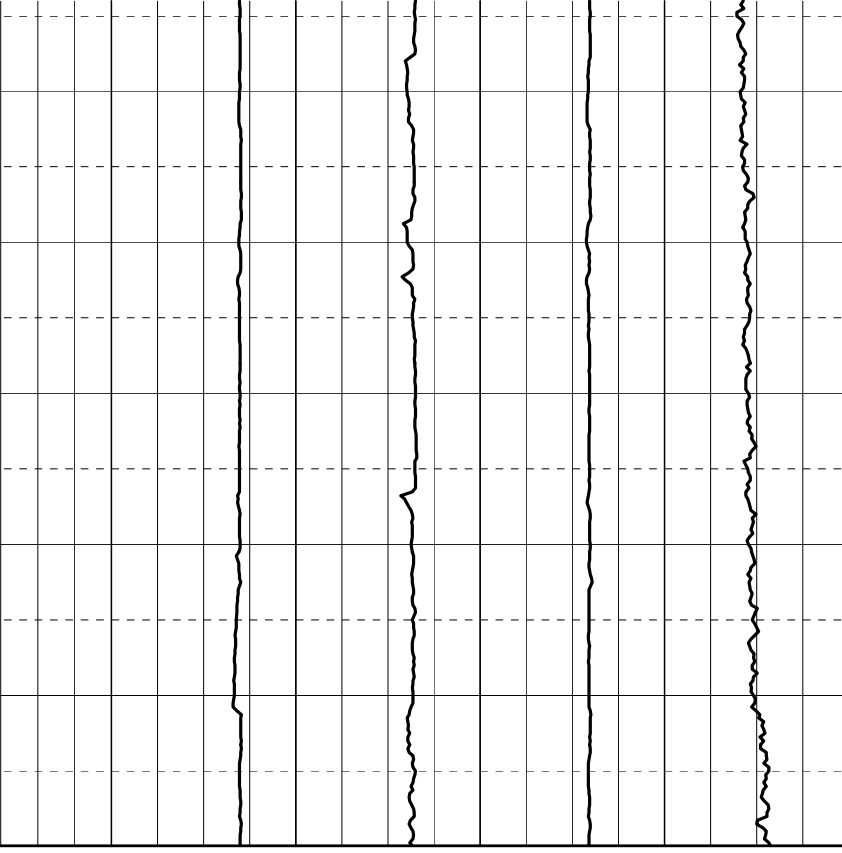
Handwritten annotations in the center of the plot, including arrows and symbols, likely indicating specific features or data points of interest.



WW: 10.10
FV: 72
PV: 27
YP: 42
Gel: 14/22
Wt: 3.2
pH: 8.9
Cl: 43k



Hand-drawn waveform plot on the right side of the grid, showing a signal with several peaks and troughs.



2600
2620
2640
2660
2680
2700